

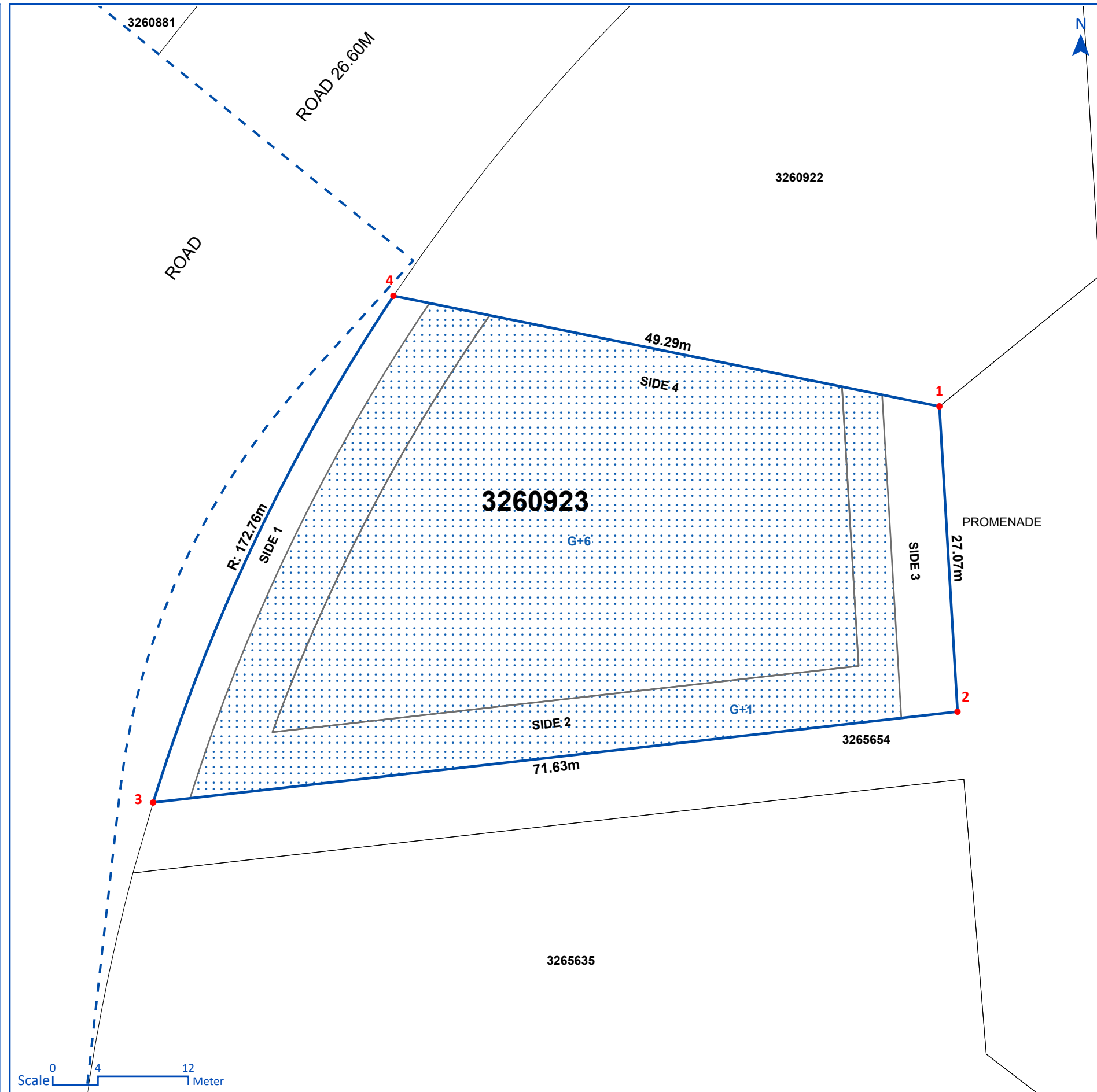
PLOT NUMBER	3260923	
OLD NUMBER	P1.E023	
PLOT AREA	2,214.64 M ² (23,838.24 FT ²)	
MAX. GFA	8,790.49 M ² (94,620.05 FT ²)	
MAX. HEIGHT	G+6	
MAX. COVERAGE	N/A	
SETBACK (M)	BUILDING	PODIUM
SIDE (1)	SEE DRAWING	N/A
SIDE (2)	SEE DRAWING	N/A
SIDE (3)	SEE DRAWING	N/A
SIDE (4)	0	N/A

LAND USE / GFA SPLIT

COMMERCIAL : RETAIL (439.53 M²)
RESIDENTIAL : APARTMENT (8,350.96 M²)

PLOT COORDINATES		
ID	EAST	NORTH
1	500385.148	2791216.699
2	500386.754	2791189.677
3	500315.572	2791181.640
4	500336.843	2791226.483

COORDINATES SYSTEM IS DLTM



GENERAL NOTES

- PARKING: FOR APARTMENT, ONE BAY FOR EACH UNIT LESS THAN OR EQUAL TO 150 SQ.M GFA AND TWO BAYS FOR EACH UNIT EXCEEDING 150 SQ.M GFA; FOR RETAIL, ONE BAY FOR EACH 70 SQ.M OF RETAIL NET AREA.
- BUILDING ELEVATIONS SHOULD FOLLOW THE ARCHITECTURAL THEME OF JADDAF WATERFRONT.
- NOC FROM DUBAI MUNICIPALITY COASTAL ZONE AND WATERWAYS MANAGEMENT SECTION TO BE OBTAINED.
- RETAIL IS RESTRICTED ON THE GROUND AND FIRST FLOOR FACING ROADS AND WALKWAYS.
- THIS SITE PLAN TO BE READ IN CONJUNCTION WITH THE PLOT GUIDELINES FOR ADDITIONAL INFORMATION.

THIS DOCUMENT IS FOR ILLUSTRATION PURPOSE. FINAL DATA CAN BE OBTAINED THROUGH SITE PLAN AND DEMARICATION CERTIFICATES REQUESTS.

PLOT DETAILS

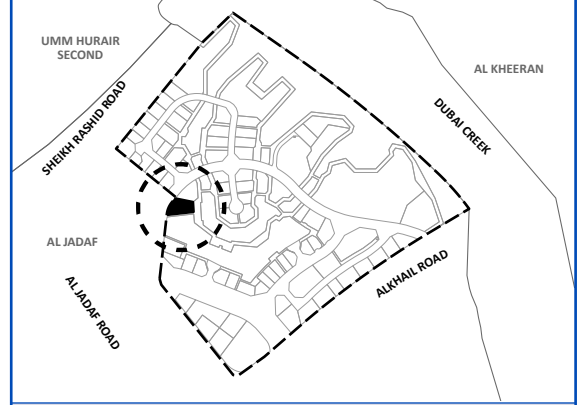
MASTER DEVELOPER

JADDAF WATERFRONT L.L.C

PROJECT NAME

JADDAF WATERFRONT

LOCATION MAP



COMMUNITY

Al Jaddaf

LEGEND

- PROJECT LIMIT
- PLOT
- BUILDING LIMIT



For live information please scan the QR code or visit
<https://gis.dda.gov.ae/dis/?PlotNumber=3260923>

ISSUE DATE **17/07/2023 02:41:37 PM**